



Drawing Still Life

Art I



What is Drawing?

- **Drawing** is a form of visual art that makes use of any number of drawing instruments to mark a two-dimensional medium.
- Instruments used include graphite pencils, pen and ink, inked brushes, wax color
- pencils, crayons, charcoal, chalk, pastels, various kinds of erasers, markers, styluses, and various metals (such as silverpoint).
- An artist who practices or works in drawing may be called a draftsman

Why is Drawing Important?

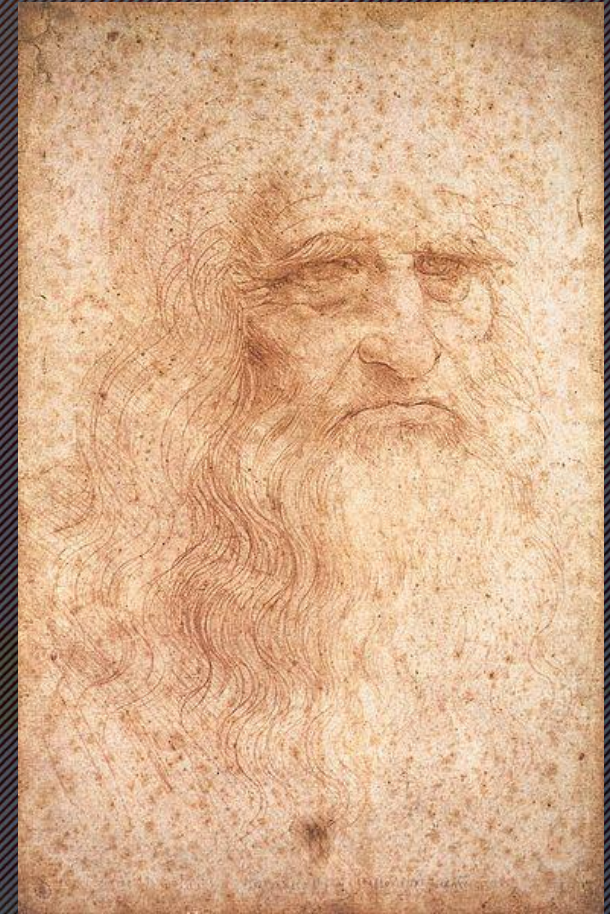
- Drawing helps the artist fully understand a subject
- Helps the artist understand depth and space



Lion Lying
Down.
Rembrandt
1650. Pen and
ink wash

Different types of drawing and methods

- Figure drawing
- Cartooning
- Doodling
- Line drawing
- Stippling
- Shading
- Tracing



Self Portrait. Leonardo da Vinci. Line Drawing Red Chalk on Paper

What is a Still Life?

- A work of art depicting mostly inanimate subject matter, typically commonplace objects which may be either natural (food, flowers, plants, rocks, or shells) or man-made (drinking glasses, books, vases, jewelry, coins, pipes, and so on).



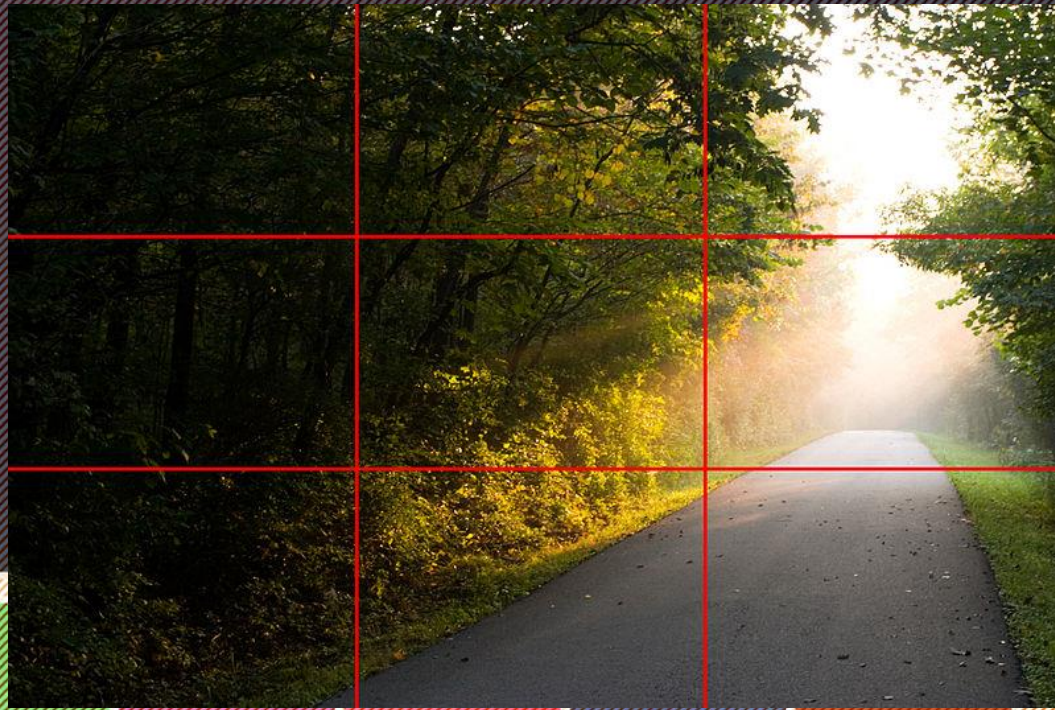
Composition

- the placement or arrangement of visual elements or ingredients in a work of art or a photograph, as distinct from the subject of a work.
- It can also be thought of as the organization of the elements of art according to the principles of art.



Composition

- Rule of Thirds- divide the image
- Rule of Odds- 1 large item is balanced by even amount of items
- Rule of Space- Illusion of movement





Tone

- Shading is the technique of varying the tonal values on the paper to represent the shade of the material as well as the placement of the shadows.
- Careful attention to reflected light, shadows and highlights can result in a very realistic rendition of the image
- Blending uses an implement to soften or spread the original drawing strokes

Form and Proportion

- Measuring the dimensions of a subject while blocking in the drawing is an important step in producing a realistic rendition of the subject
- When attempting to draw a complicated shape such as a human figure, it is helpful at first to represent the form with a set of primitive shapes (cube, sphere, cylinder, and cone)
- Once the basic shapes are there, lines are used to connect them to bring out the realistic form

THE ASSIGNMENT

- At your table are multiple still life objects.
- With the people at your table, come up with a still life arrangement that works for everyone. (I will come around and take a picture)
 - Choose 5 objects
 - Look at placement
 - Think About complexity
- Create 3 sketches to show different compositions. Think about
 - Rule of Thirds
 - Rule of Space
 - Crop in close on some
 - Move to a different angle if you need to
- Choose which one works best and create the final

