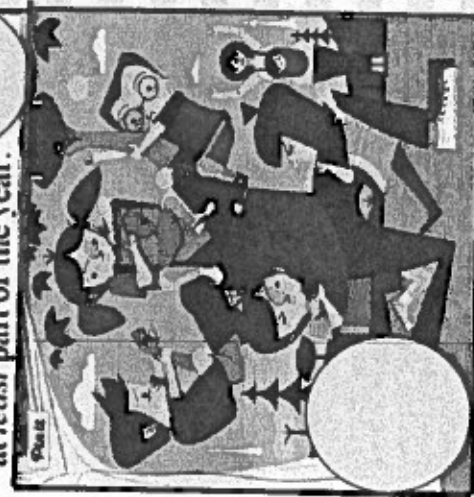


The Wetlands of the South *Why are the South's wetlands so important?*

Text Features Matching

Okfenokee(oh kuh fuh NOH kee) Swamp is a large wetland in the South. wetland is a place where ground is soaked with water at *least* part of the year.



Centered Title in Heading Caps

The MLA page format may be extended to reflect journal practices and common conventions. These include the use of headings, single spacing within block quotes and references, and indenting block quotes just one-half inch rather than specified one inch.

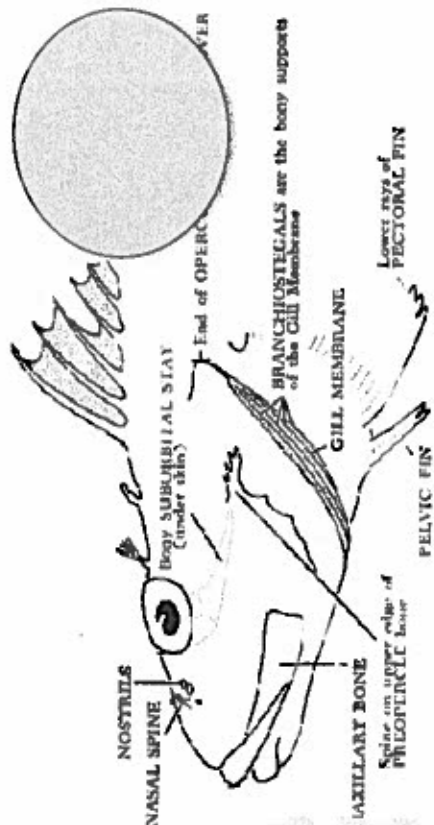
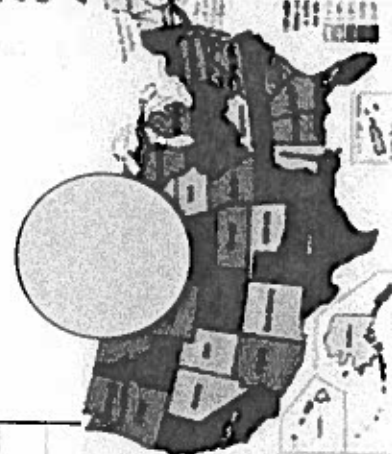
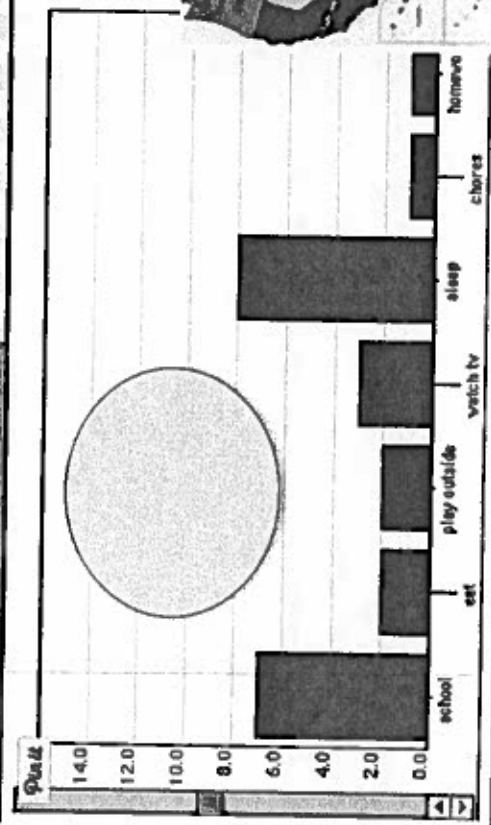
First Level Heading

The first paragraph after a heading or subheading is not indented. Subsequent paragraphs are indented one-half inch. Block quotes are required when the quote exceeds four lines, indented one-half inch from the left margin.

To be a philosopher is not merely to have subtle thoughts, nor even to found a school, but to love wisdom as to live according to its dictate, to walk simply, independently, magnanimously.
(Thoreau, *Walden*, ch. 5, 15)

Second level heading. This is a

paragraph heading. This is one of the rules of the journal *PMLA*. The subheadings should be in a bold font, or both. Be consistent!



Glossary

Abstract

[illegible]

2025 RELEASE UNDER E.O. 14176

[illegible]

ACQUISITION

2008/07/06

Abstract

polymer binder

11-19-2014

There are a number of reasons why it is important to have a good understanding of the law of the land.

Discussion

For more information, call 1-800-368-5868 or visit www.rockwell.com

References

የሰነድ ምረቃ ስልጣን የሚሰጥ የፋይናንስ ሚኒስቴር

1000

LITERATURE CITED

THE FUTURE

THE UNIVERSITY OF CHICAGO

Index

- A**
About cordless telephones 51
Advanced operation 17
Answer an external call during an
intercom call 15
Answering system operation 27
- B**
Basic operation 14
Battery 9, 39
- C**
Call log 22, 37
Call waiting 14
Chart of characters 18
- D**
Date and time 8
Delete from redial 26
Delete from the call log 24
Delete from the directory 20
Delete your announcement 32
Detachable bracket installation 4
Dial a number from redial 26

- Dial type 4, 12
Directory 17
DSL filter 5

- E**
Edit an entry in the directory 20
Edit handset name 11

- F**
FCC, AGTA and IC regulations 53
Find handset 16

- H**
Handset display screen messages 36
Handset layout 6

- I**
Important safety
Index 56-57
Installation
Install handset
Intercom call
Intercom 4
Internet 4

GREAT WALL OF CHINA CHINA

5

Great Wall of China, which was
built to keep invading Mongol
tribes out of China

Table

Table of Contents

About the In-Sync Activity Card	11
Movement Gets Us in Sync!	12
Get in Sync—in Seconds! & Helpful Hints	13

Beginning Activities

Body Balloon	1
Car Wash	2
Clap Your Feet	3
Copy Cat	4
Floppy Noodle	5
Hold Up the Wall	6
Hoopstretch	7
Hoop Day	8
Jumpland	9
Levitation	10
Look and Be	11
Me and My Shadow	12
Move on Up	13
Over and Under	14
Paint the Town	15
Paper Claps	16
Pass the Ball	17
Repeat My Beat	18
Scurry Scavenger Hunt	19
Treasure Trove	20

ESOL Viking Quest

Feb 2-6

Name: _____

Text Features

Test

table of contents	map	graph	photograph	index	glossary
bold Print	illustration	diagram	Italic print	heading	caption

Directions: Fill in the blank for each sentence using the words from the word bank.

1. _____ calls attention to new and important words.
2. _____ are words that are next to a picture that explains what it is about.
3. _____ is a drawing that shows parts of something.
4. The _____ is an alphabetical list of important words and their meanings.
5. A _____ shows information in a visual way.
6. The _____ tells the reader what the section of reading is about.
7. A _____ is a hand-drawn picture that helps the reader visualize the text.
8. The _____ is a list of words that often gives a page number where the words occur in the text.
9. _____ are slanted text that identifies new or important words.
10. A _____ is a picture that shows the location of things or places.
11. A _____ is a picture that was made with a camera.
12. The _____ gives the heading and beginning page of each section of the book.

ESOL Viking Quest

Feb. 2-6

Lesson 9 – 11 Test

Name: _____

Use the correct form of *BE* to complete each question. Then write the short answers.

Example:

- | | |
|------------------------------|-------|
| _____ you a boy? | _____ |
| 1. _____ you a girl? | _____ |
| 2. _____ that your dog? | _____ |
| 3. _____ this exercise easy? | _____ |
| 4. _____ you good at math? | _____ |
| 5. _____ you a good reader? | _____ |
| 6. _____ that your bookbag? | _____ |
| 7. _____ the windows open? | _____ |
| 8. _____ the door open? | _____ |
| 9. _____ she smart? | _____ |
| 10. _____ they fast? | _____ |

Complete the sentences with *There is* or *There are*.

- _____ two nightstands in the bedroom.
- _____ a book on the shelf.
- _____ a child playing at the park.
- _____ flowers on the table.
- _____ is a refrigerator in the kitchen.
- _____ a cat on the sofa.
- _____ a book on your desk.
- _____ books on your desk.
- _____ pictures on the wall.
- _____ a toy missing.

